

Wyoming Statewide Forest Resource Assessment

- Our Process
- Where We Are
- What We Learned

Wyoming Statewide Assessment

Cooperators and Partners:

- Wyoming Legislature Joint Agriculture Committee
- Wyoming Forestry Advisory Committee
- Wyoming Community Forestry Council
- Wyoming Game & Fish Department
- USFS
- NRCS
- BLM
- BIA
- Wyoming Department of Agriculture
- USFS – Rocky Mountain Research Station

Wyoming Statewide Assessment

- Wyoming Association of Conservation Districts
- NRCS State Technical Committee
- Wyoming Fire Action Team
- Office of State Lands & Investments
- Council of Western State Foresters
- Intermountain Forest Association
- The Nature Conservancy
- The Conservation Fund
- Black Hills Forest Resource Association
- Wyoming Stewardship Coordinating Committee
- State Forestry Staff

Wyoming Statewide Assessment

Process:

- Reviewed National Guidance
- Discussed **Internally** direction and scope
- Met with Cooperators to agree on direction
- With Cooperators Chose data layers and sources for Analysis
- Created GIS Analysis Map

Wyoming Statewide Assessment

Process:

- Reviewed Analysis and Weightings with Cooperators
- Drafted Assessment Document
- Shared Draft Assessment with Cooperators for Review and Comment
- Final Assessment

Wyoming Statewide Assessment

Data Layers:

- Development Risk (National Data)
- Forest Fragmentation (NationalAtlas.gov)
- Wildfire Risk (2 layers, Redzone and Regime Class)
- Forest Health (National I&D Map)
- Fish and Wildlife (2 layers terrestrial and aquatic)
- Water Quality and Supply (Developed in House)

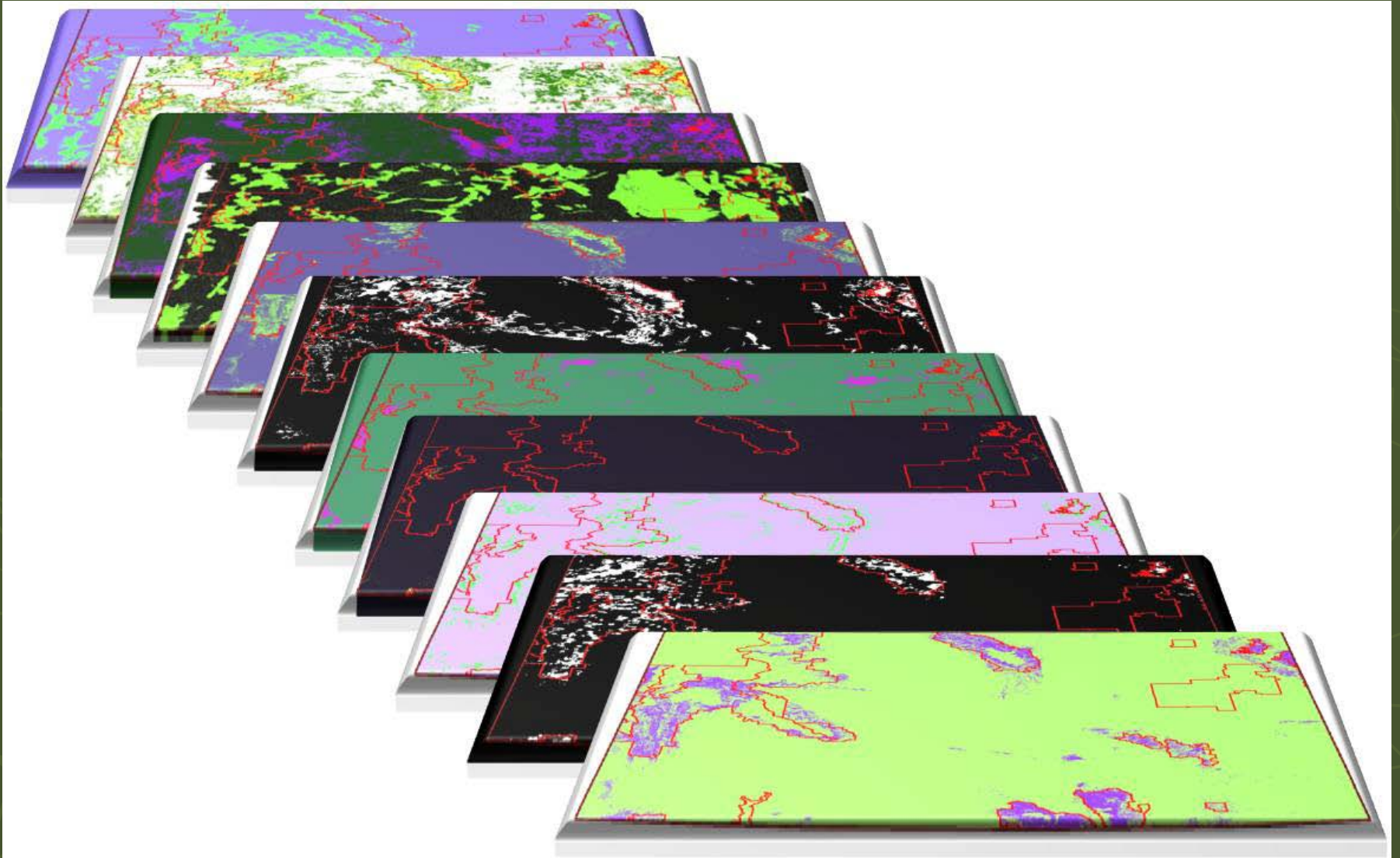
Wyoming Statewide Assessment

Data Layers:

- Economic Potential (2 Layers Developed in House)
- Green Infrastructure (Legacy AON)
- Community Forestry (Incorporated Communities)
- Agroforestry (Developed in House)
- Stewardship Potential (SAP)

Fourteen Total Layers (each layer weighted equal)

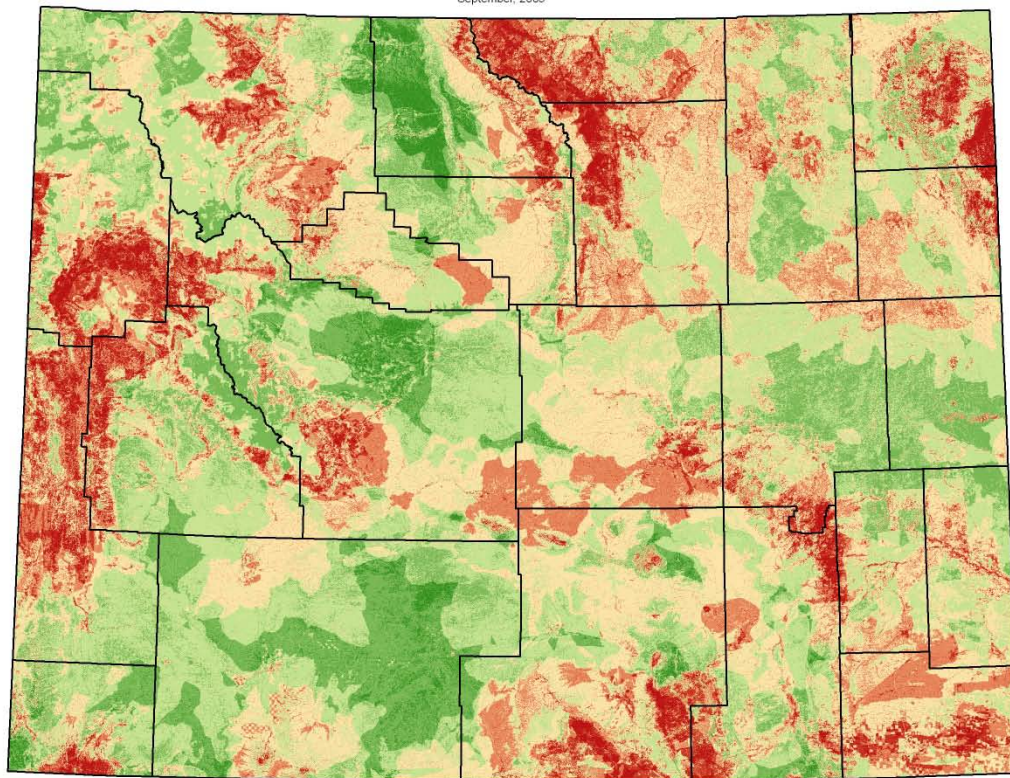
Wyoming Statewide Assessment



Wyoming Statewide Assessment of Forest Resources

Critical Landscapes

September, 2009



Data Layers

Development Risk: Areas expected to see increased housing development over the next 20 years. National data from CSU research.

Forest Fragmentation: Areas becoming more susceptible to ISD due to fragmentation/human activity. National data layer.

Wildfire Risk: Areas where planning and management can reduce risk. Two layers - regions and fire regime condition class.

Forest Health Risk: Areas where silvicultural treatment can reduce risk of damage. National insect and disease risk map data.

Fish and Wildlife Habitat: Areas that provide habitat for valued fish and wildlife species. Game & Fish terrestrial game/non-game and aquatic data plus sage grouse core

Water Quality and Supply: Identify watersheds where forest conservation and management is important. Areas receiving over 20 inches of annual precip plus streamside management zones.

Economic Potential: Areas where forests can or do play a major economic role. Two layers - working forests and mill demand forests - developed by WSPF.

Green Infrastructure: Emphasize opportunities for an interconnected green space network. Used high priority forest legacy areas.

Agroforestry: WSPF decision to include based on importance. Data is non-forested lands below 7000 feet receiving at least 12 inches of precip.

Stewardship: High priority for stewardship planning. Data is high priority from SAP analysis.

Community Forestry: Areas where management of the community forest can have positive impacts. Data layer is boundaries of incorporated communities.

Layer Weights

Development Risk	1
Forest Fragmentation	1
Wildfire Risk	101
Forest Health Risk	1
Fish & Wildlife Habitat	101
Water Quality & Supply	1
Economic Potential	101
Green Infrastructure	1
Community Forestry	1
Agroforestry	1
Stew. Potential	1

Max. Value Possible 14

Purpose of this analysis:
Identify, describe, and spatially define forest landscape areas where forestry program outreach and activity will be emphasized and coordinated.

National Priorities:
- Conserve working forest lands.
- Protect forests from fires.
- Enhance public benefits from trees and forests.



Disclaimer - These data are intended for reference purposes only, and the content, accuracy, timeliness, or completeness will not be guaranteed. The source information on the north side of the information contained herein and the data values should be collected. The State of Wyoming warrants no responsibility and will not be held liable for any damages incurred as a result of the use or misuse of these data.

Wyoming Statewide Assessment

Where are We At:

- Assessment Has Been Reviewed by Cooperators and Comments Received
- Final Assessment is Completed

Next Step: Working with Cooperators to Develop Strategies for Implementation

Wyoming Statewide Assessment

What Did We Learn?

- We chose the right process for our State
- Our cooperators responded better with something to look at
- While there was really no surprises, the process has helped focus programs
- This is not rocket science, common sense works best.
- It doesn't cost an arm and a leg