

Texas Statewide Forest Resources Strategy

A comprehensive strategic plan to address forest-related conditions, trends, threats, and opportunities as identified in the May 2009 Texas Statewide Assessment of Forest Resources

***Tom Boggus
Interim State Forester &
Director of Texas Forest Service***

***National Association of State
Foresters Annual Meeting***

September 24, 2009

Albuquerque, NM





Texas Statewide Assessment

Conditions and Trends	5
National and Regional Overview of State Assessments	5
Stakeholder Issues	33
Overview of Spatial Analysis	34
Combined Rural and Urban Priority	109
Comparison with State Wildlife Action Plan	115
<i>Issue 4: Water Quality and Quantity</i>	61
<i>Issue 5: Wildfire and Public Safety</i>	67
<i>Issue 6: Texas Urban Forest Sustainability</i>	75
<i>Sub-Issue 1: Reduce the Impacts of Urbanization on Forest Landscapes</i> ..	79
<i>Sub-Issue 2: Moderate the Impacts of Catastrophic Events</i>	84
<i>Sub-Issue 3: Protect and Improve Air Quality</i>	89
<i>Sub-Issue 4: Protect and Improve Water Quality</i>	94
<i>Sub-Issue 5: Mitigate Climate Change and Conserve Energy</i>	99
<i>Sub-Issue 6: Build U&CF Program Capacity at Local Level</i>	104
Overall Urban Forest Priority	107



<i>Sub-Issue 4: Protect and Improve Water Quality</i>	94
<i>Sub-Issue 5: Mitigate Climate Change and Conserve Energy</i>	99
<i>Sub-Issue 6: Build U&CF Program Capacity at Local Level</i>	104
Overall Urban Forest Priority	107

Combined Rural and Urban Priority	111
Comparison with State Wildlife Action Plan	117

Appendix	A-121
Data Layers Used in Spatial Overlay Analyses	A-123
Simple Example of Weighted Overlay Analysis	A-159

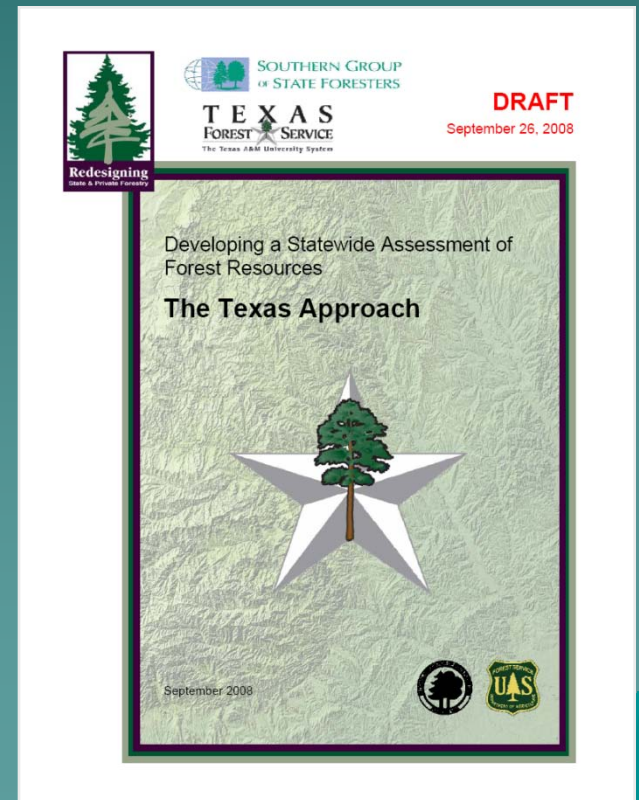


Texas Statewide Assessment

Because issues vary in importance among states, task force decided that instead of “fill-in-the-blank” template, an example, or model, assessment would be developed

Companion “how-to” document:

- How assessment was developed
- How relevant spatial data can be analyzed to identify priority areas
- States free to follow this model or develop one that better fits their state and preferences
- Following model will allow for better comparison across states





Texas Statewide Forest Resources Strategy

S&PF Redesign and 2008 Farm Bill require states to develop a Statewide Forest Resource Strategy based on their Assessments

Statewide Forest Resource Strategy will:

- Describe long term strategies to address priorities
- Identify how Federal and other resources will be invested
- Provide a timeline for implementation
- Describe how outcomes will be monitored and actions revised
- Describe how the state will accomplish S&PF national objectives and address three Redesign themes
- Describe partner and stakeholder involvement



Texas Statewide Forest Resources Strategy

Basic Outline:

Cover

Table of Contents

Executive Summary

Introduction

I. Strategic Issues Section

A. Issues Description

B. Goals, Objectives, Strategies

C. Performance Measures

II. State Forestry Programs Section

A. Program Name & Description

B. Priority Areas

C. Goals, Objectives, Strategies

D. Performance Measures

III. Matrix

IV. Stakeholder Input

V. Appendix

(Program Authorities, National Guidelines, Other)



Texas Statewide Forest Resources Strategy

Section I

Stakeholder Issues in Statewide Forest Resource Strategy (Based on Texas Statewide Forest Resources Assessment)

Issue 1: Population Growth & Fragmentation--Reduce the Impacts of Urbanization on Forest Landscapes

Issue 2: Central Texas Woodlands Conservation

Issue 3: Sustainability of Forest Resources in East Texas

Issue 4: Water Quality & Quantity

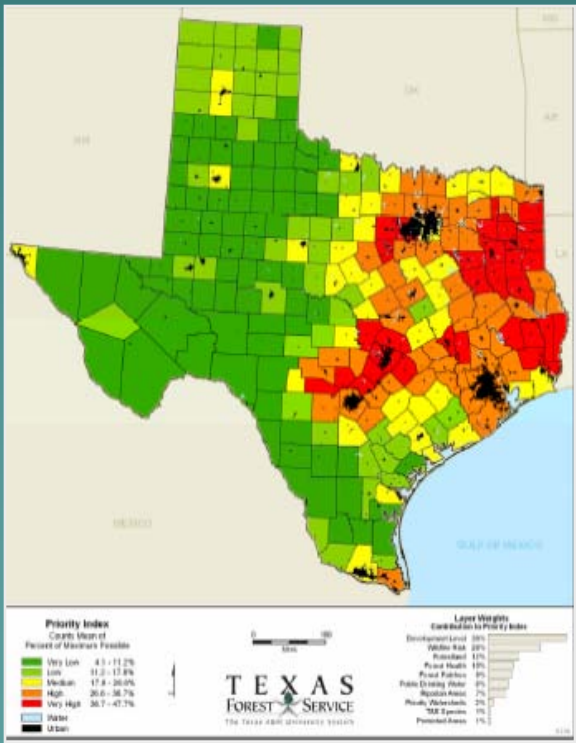
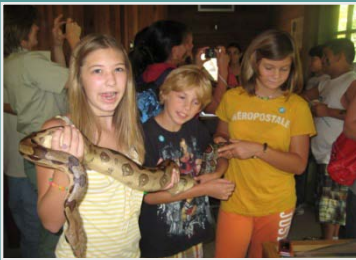
Issue 5: Wildfire & Public Safety

Issue 6: Texas Urban Forest Sustainability

Texas Statewide Forest Resources Strategy

Examples of Goals, Objectives, Strategies

Issue 1: Population Growth & Urbanization--Reduce the Impacts of Urbanization on Forest Landscapes



Goal 1: *Identify areas across the state that will experience significant urban growth in the next 30 years.*

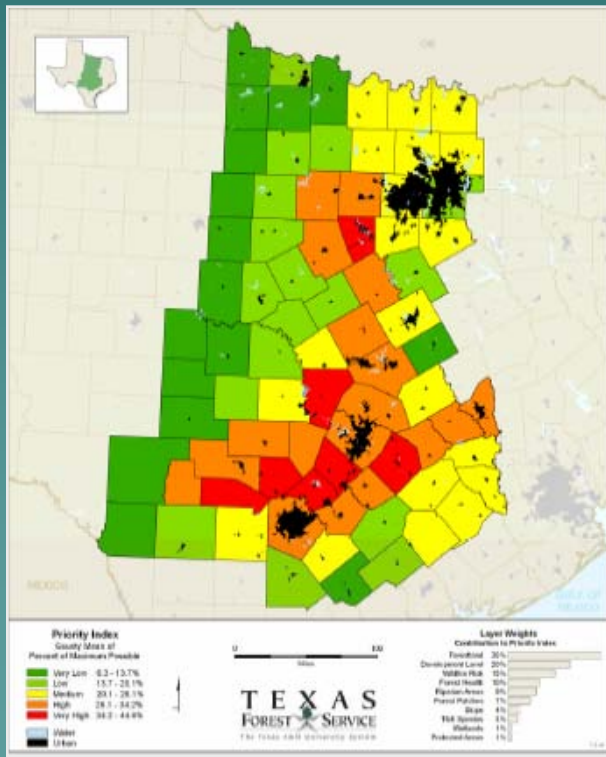
Objective 1.1: *Assist leadership in devising affordable and effective ways to grow, develop, and protect their communities while integrating critical contributions made by forest ecosystems and natural areas about to be impacted by growth.*

Strategy 1.1.1: *Utilize various GIS technology to identify areas of rapid urban growth and expansion. Models and analysis tools include Theobald GAP Analysis and UPLAN urban density/ land-use impact models, the Southern Forest Land Assessment (SFLA).*

Texas Statewide Forest Resources Strategy

Examples of Goals, Objectives, Strategies

Issue 2: Central Texas Woodlands Conservation



Goal 1: Prioritize current landowner assistance and partnership programs, and associated personnel and resources to landowners located in high priority landscape areas

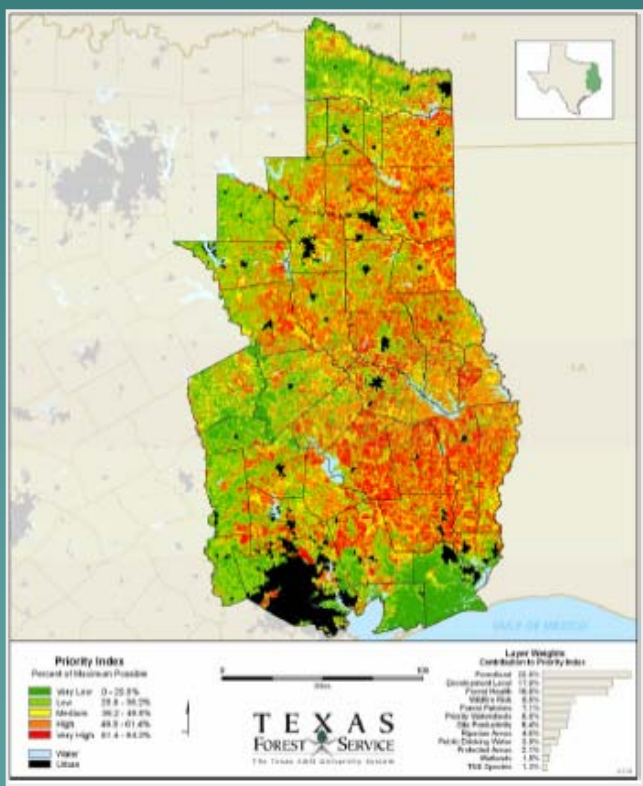
Objective 1.1: Provide comprehensive program leadership in critical multi-county regions of central and west Texas.

Strategy 1.1.1: Expand job descriptions TFS staff foresters currently involved in oak wilt suppression in Central Texas to allow staff to work with partners to ensure total ecosystem protection and sustainability.

Texas Statewide Forest Resources Strategy

Examples of Goals, Objectives, Strategies

Issue 3: Sustainability of Forest Resources in East Texas



Goal 1: Determine the impacts of additional wood processing facilities on East Texas timber supply.

Objective 1.1 Evaluate how new mills will impact long-term timber supply of Southeast Texas forests.

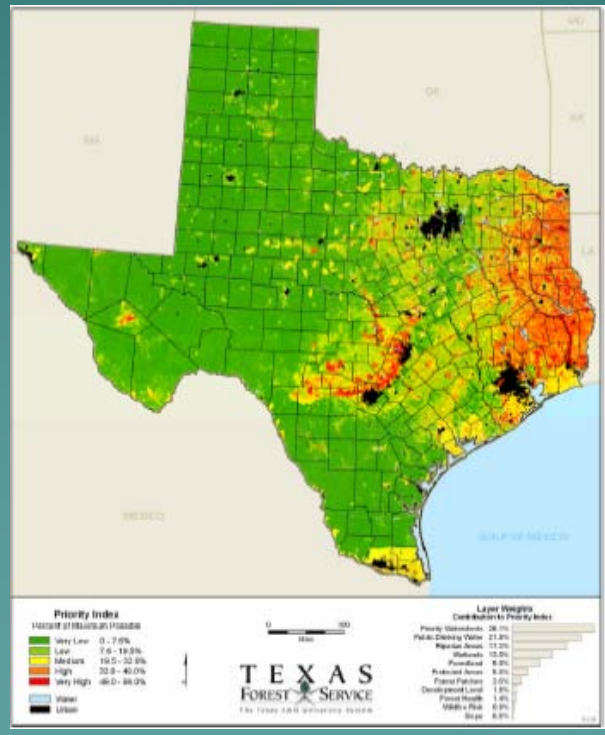
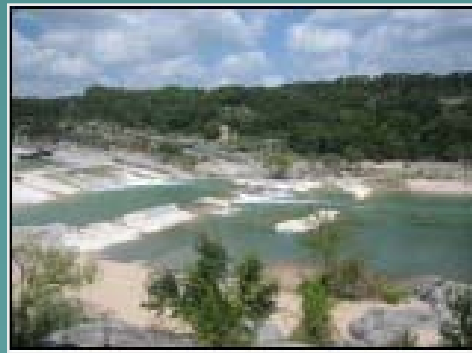
Strategy 1.1.1: Prepare a report of long-term timber supply projections based on FIA data and likely wood utilization rates of the proposed mill.

Strategy 1.1.2: Monitor the impacts of hurricanes on timber supply.

Texas Statewide Forest Resources Strategy

Examples of Goals, Objectives, Strategies

Issue 4: Water Quality & Quantity



Goal 1: Protect water quality

Objective 1.1 Encourage BMP Implementation on forestry operations.

Strategy 1.1.1: Expand educational efforts to new landowners.

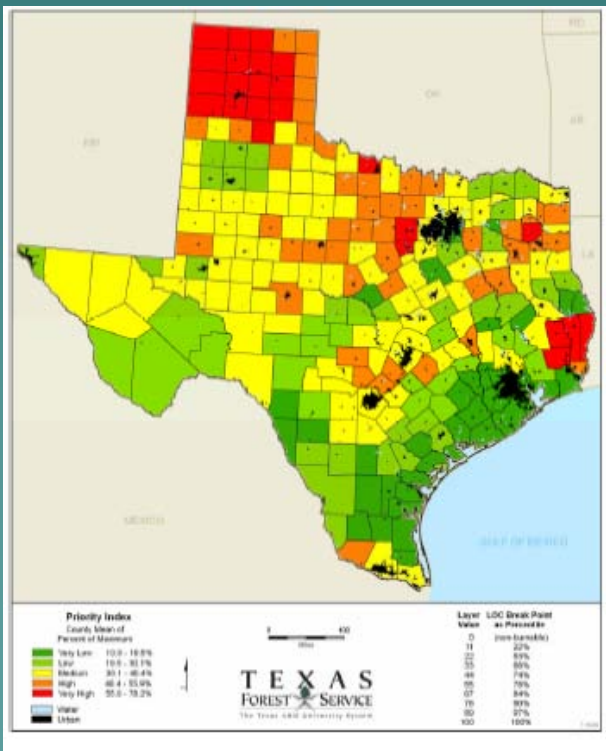
Objective 1.2 Encourage BMP Implementation on other land operations.

Strategy 1.2.1: Develop non-traditional BMPs (urban, Central TX).

Texas Statewide Forest Resources Strategy

Examples of Goals, Objectives, Strategies

Issue 5: Wildfire & Public Safety



Goal 1: Utilize predictive Services to continually assess state, regional, and national wildfire conditions

Objective 1.1: Calculate current & predicted fire behavior

Strategy 1.1.1: Monitor the conditions of wildland fuels.

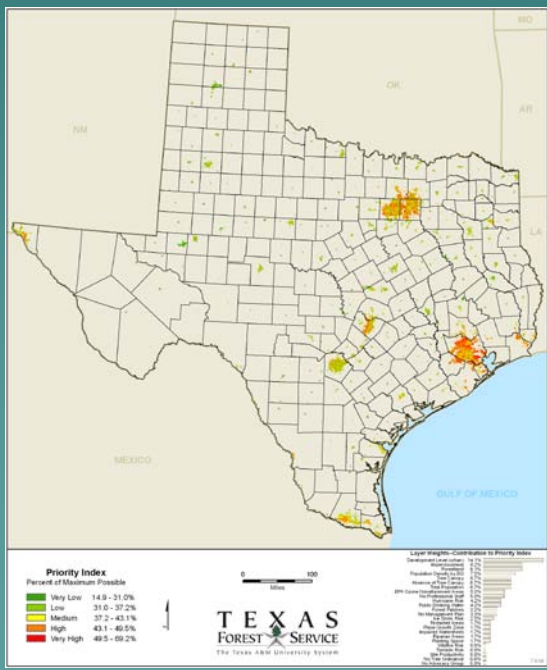
Strategy 1.1.2: Track fire occurrence and ignition sources

Strategy 1.1.3: Predict weather conditions throughout the year

Texas Statewide Forest Resources Strategy

Examples of Goals, Objectives, Strategies

Issue 6: Texas Urban Forest Sustainability



Goal 1: Reduce the impacts of land-use change, fragmentation, and urbanization on forest landscapes.

Goal 2: Moderate the impacts of catastrophic events

Objective 2.1: Improve disaster preparedness at the state and local level to include urban trees and tree issues.

Strategy 2.1.1: Assist vulnerable communities with inventory and plan writing for emergency routes; pre-locate debris holding or processing sites.



Texas Statewide Forest Resources Strategy

Section II.

TFS Programs in Statewide Forest Resource Strategy Document

- East Texas Programs Delivery
- West Texas Programs Delivery & West Texas Nursery
- Tree Improvement Program & Western Gulf Cooperative
- Forest Sustainable Programs
 - Forest Inventory & Analysis
 - Ecosystem Services
 - Water Quality
 - Forest Taxation
 - Forest Economics & Resource Analysis
 - State Lands

- Urban Forestry
- Forest Pest Management
- Landowner Assistance Programs
 - Stewardship
 - Forest Legacy
 - Conservation Education
 - State Lands
- Wildfire Protection Plan
 - Predictive Services
 - Mitigation & Prevention
 - Planning & Preparedness
 - Local Capacity Building
 - Incident Response
 - Law Enforcement



Texas Statewide Forest Resources Strategy

Section III. Matrix

A table that will demonstrate how each TFS program will address one or more issues and strategies in the issues section and one or more of the national Redesign themes

Section IV. Stakeholder Input

1. Existing Stakeholder Meeting Agendas
2. TFS Representatives on Committees
3. Web Based Public Input (Nov-Jan)

Section V. Appendix

Documents that support the strategy replacing other S&PF required documents such as Legacy AON, Stewardship Plan, Urban Plan, etc.



Texas Statewide Forest Resources Strategy

**Checklist for Statewide Forest Resource Assessments and Strategies
Requirements of the 2008 Farm Bill**

The State Assessment and Strategy must be submitted to the USDA Forest Service, with this check list signed by the State Forester, by June 18, 2010. Federal review will focus on the requirements as outlined in the Food, Conservation, and Energy Act of 2008 (2008 Farm Bill).

State: _____

Approved by the State Forester: _____

	Name	Date

*		

Statewide Forest Resource Assessment Includes:

The conditions and trends of forest resources in the state Yes No

The threats to forest lands and resources in the state consistent with national priorities Yes No

Areas or regions of the state that are a priority Yes No

Any multi-state areas that are a regional priority..... Yes No

Statewide Forest Resource Strategy Includes:

Long-term strategies to address threats to forest resources in the state* Yes No

Description of resources necessary for state forester to address state-wide strategy* Yes No

**Can be presented in a strategies matrix with columns for (a) programs that contribute, (b) resources required, (c) national objective it supports, and (d) performance measure(s) that will be used for each strategy.*

Stakeholder Groups Coordinated with for the Statewide Assessment and Strategy:

Note: this could be identified in the body of the documents or as an appendix.

State Forest Stewardship Coordinating Committee (required) Yes No

State Wildlife Agency (required) Yes No

State Technical Committee (required) Yes No

Lead agency for the Forest Legacy Program (if not the state forestry agency) (required).. Yes No

Applicable Federal land management agencies (required) Yes No

Other Plans Incorporated in Statewide Assessment and Strategy:

Community wildfire protection plans (required) Yes No

State wildlife action plans (required) Yes No

Other Yes No

Deemed to be sufficient (all requirements met)

Comments:

Not deemed to be sufficient* (missing one or more requirements)

Indicate Corrective Action(s) Necessary to Meet Sufficiency Requirement:

Certified by Regional Forester/NA Director: _____

	Name	Date
--	------	------

DECISION BY THE *DEPUTY CHIEF FOR STATE & PRIVATE FORESTRY*

Approve _____ Date _____

Approval Process

Completed

Prior to May 2010

Reviewed

“Checklist” at USFS R8 to check for Farm Bill compliance

Approved

Signed by USFS Deputy Chief for State & Private Forestry on behalf of the USDA Secretary of Agriculture



Tom Boggus

Interim State Forester & Director of
Texas Forest Service

979-458-6630

tboggus@tfs.tamu.edu

<http://txforestsERVICE.tamu.edu>

